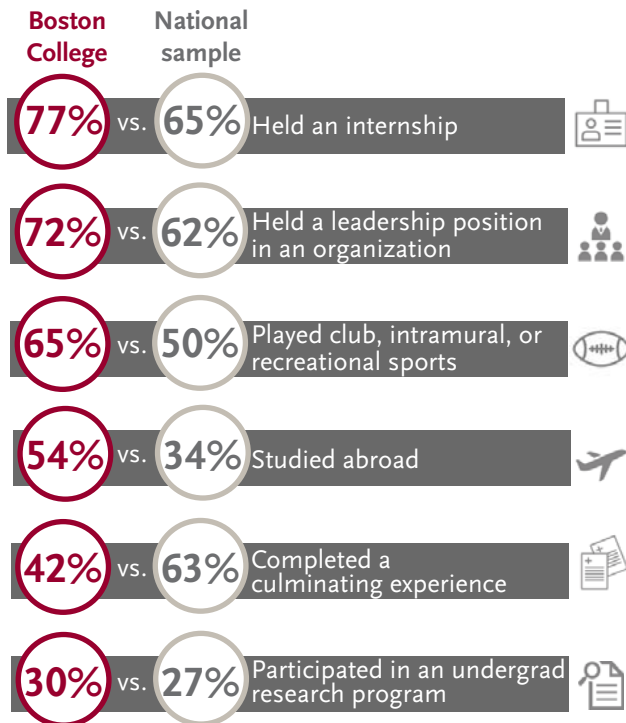


BOSTON COLLEGE CLASS OF 2017

COLLEGE SENIOR SURVEY

The College Senior Survey (CSS) collects information about students' experiences, attitudes and perceptions as they leave college. In 2017, 1,149 Boston College seniors participated in the survey, a 51% response rate.

ACTIVITIES IN COLLEGE



PERSONAL GROWTH



Seniors were asked to rate themselves on traits compared with the average person their age.

On the majority of self-ratings, a greater percentage of Boston College seniors rated themselves above average or in highest 10% compared to their peers.

Higher than peers



- Writing ability
- Academic ability
- Leadership ability
- Mathematical ability
- Drive to achieve
- Physical health
- Understanding of others
- Public speaking ability
- Intellectual self-confidence

Leadership skills ratings by Boston College seniors have been on a steady rise since 2007.



Statistically significant differences between Boston College and peers from all baccalaureate-level institutions are displayed.

FUTURE PLANS

83% met with an advisor/counselor about career plans.
An increase from 72% percent in 2007.

71% performed volunteer work senior year.
An increase from 63% percent in 2007.



91%

Agreed that Boston College prepared them for their career



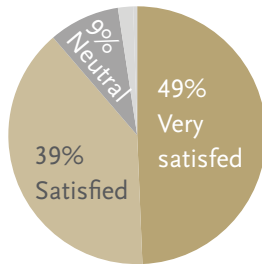
93%

Agreed that Boston College prepared them for advanced education

STUDENT SATISFACTION

89%

of BC seniors were satisfied or very satisfied with their overall college experience



Overall quality of instruction **92%**

Courses in your major field **88%**

General education or core curriculum **77%**

Academic Advising **51%**

Percent responding satisfied or very satisfied

Boston College satisfaction with **academic advising** increased from 40% percent in 2007.

87%

of BC seniors would select the same institution if they were to make their college choice again.

IMPACT OF BOSTON COLLEGE

THE FRESHMAN SURVEY AND COLLEGE SENIOR SURVEY

As a follow up to the CIRP Freshman Survey (TFS), the CSS allows us to evaluate the academic and personal development of the same cohort of students over their college experience and to assess the impact of institutional programs, policies, and practices on the students' experiences and outcomes.

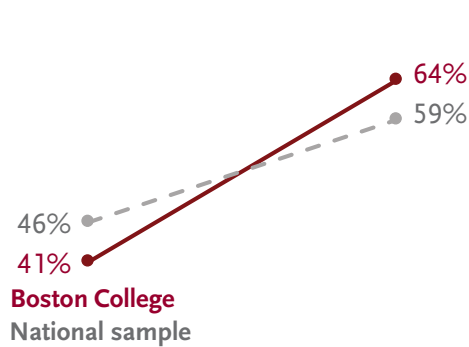
Students are asked as freshmen, then again as seniors...

GOALS THEY VALUE

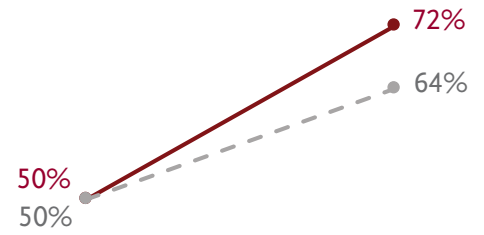
Boston College students demonstrate a *greater increase* in some measures of civic engagement and personal growth from freshman to senior year than do their peers.

Percentage of students reporting it is *essential or very important* to them personally, that

Influence social values



Develop a meaningful philosophy of life

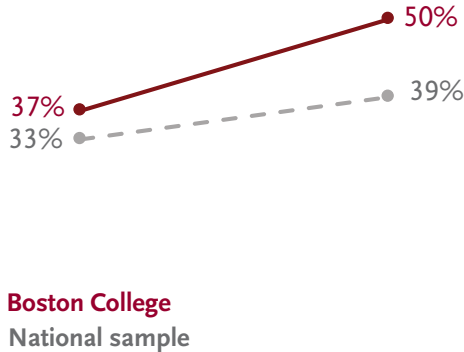


TIME SPENT PARTICIPATING IN ACTIVITIES

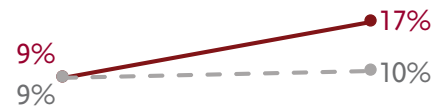
Boston College students report a *greater increase* in these social activities from freshman to senior year than do their peers.

Percentage of students spending *more than 10 hours per week...*

Socializing with friends in person



Participating in student clubs/groups

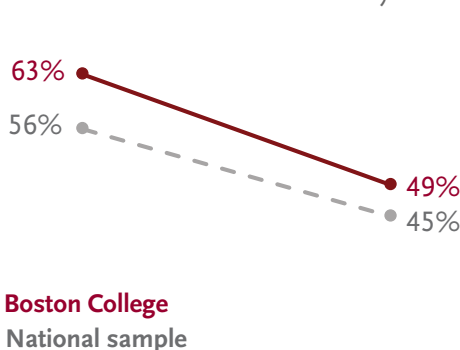


RATE THEIR SKILLS/ABILITIES COMPARED TO PEERS THEIR AGE

Like their peers, Boston College students' assessment of their math skills decreases between freshman and senior year, while their assessment of their writing skills increases.

Percentage of students rating themselves *above average or highest 10%* for...

Mathematical ability



Writing skills

